

XV CAMPEONATO PANAMERICANO JUNIOR DE SQUASH

ASUNCIÓN – PARAGUAY

24 to 30 JUNE 2017



1. ORGANIZACIÓN

ASOCIACIÓN PARAGUAYA DE SQUASH: Directorio APS

ORGANIZING COMMITTEE:

- General Director: Mario Domínguez
director_nacional@paraguaysquash.com
- Directora de Logística: Luciana del Piano
- Director de Finanzas: Oscar Grau

OFFICIALS:

- Championship Director: Francisco Paradisi
fps.sectg@gmail.com
- Technical Director: Daniel Penna
daniel@cssquash.com

OFFICIAL E-MAILS:

fps.sectg@gmail.com / daniel@cssquash.com /
director_nacional@paraguaysquash.com

OFFICIAL WEB PAGE:

www.paraguaysquash.com



**TECHNICAL
REGULATIONS
FOR
CHAMPIONSHIPS**

TECHNICAL REGULATIONS FOR CHAMPIONSHIPS

TABLE OF CONTENTS

1 LOCATION AND DATE

2 COMPETITORS

2.1 PLACES ADMITTED BY DELEGATION

2.2 ENTRY FEES

2.3 ELIGIBILITY

2.3.1 Junior Championships

2.3.2 Eligibility of Athletes

2.3.3 Nationality of Athletes

3 ENTRIES

3.1 NUMERICAL ENTRIES

3.2 NOMINAL ENTRIES

3.2.1 ALTERNATE ENTRIES

3.3 SQUASH PLAYER IDENTIFICATION NUMBER (SPIN)

4 REGULATIONS

4.1 OFFICIAL BALL

4.2 PROTECTIVE EYEWEAR

4.3 RESOLUTION OF CONTROVERSIES

4.3.1 General nature

4.3.2 Issues of technical nature

4.4 OFFICIAL SOFTWARE FOR CHAMPIONSHIPS

5 EVENTS , CATEGORIES AND SYSTEM OF COMPETITION

5.1 INDIVIDUAL EVENT

5.2 DOUBLES EVENT

5.3 TEAMS EVENT

6 STRUCTURE OF THE SQUASH CHAMPIONSHIP

6.1 CHAMPIONSHIP AND BIG GAMES COMMITTEE

6.2 SEEDING PANEL

6.3 CHAMPIONSHIP TECHNICAL DIRECTOR

6.4 CHAMPIONSHIP ORGANIZING COMMITTEE

6.5 TOURNAMENT REFEREE

7 PROTESTS AND APPEALS

8 SYSTEM OF COMPETITION

8.1 INDIVIDUAL EVENT

- 8.1.1 Scoring and Matches
- 8.1.2 Draws and Seeds
 - 8.1.2.1 Seeding for the individual draws
- 8.1.3 Draw of 16 (8 top seeds)
- 8.1.4 Draw of 32 (16 Top Seeds)
- 8.1.5 Draw of 64 (32 Top Seeds)
- 8.1.6 Others

8.2 DOUBLES EVENT

- 8.2.1 Scoring and Matches
- 8.2.2 Draw and Seeds
- 8.2.3 Others

8.3 TEAMS EVENT

- 8.3.1 Scoring and Matches
- 8.3.2 Seeds
- 8.3.3 Draw from 6 to 8 Teams
- 8.3.4 Draw from 9 to 12 Teams
- 8.3.5 Draw from 13 to 16 Teams
- 8.3.6 Draw from 17 to 24 Team
- 8.3.7 Others

8.4 RACQUES ORDER FOR THE MACHES

8.5 COMPETITION WITH AN INCOMPLETE TEAM

8.6 FINAL ORDER OF THE TEAMS IN A GROUP

8.7 OTHERS

9. COMPETITION PROGRAM

10. TRAINING PROGRAM

11. PROTOCOL, AWARDS AND MEDALS

11.1. CEREMONIES

11.2 AWARDS

11.3 MEDALS

12. OFFICIATING

12.1 TOURNAMENT REFEREE ROLE.

12.2 TECHNICAL MEETINGS FOR REFEREES.

12.3 REFEREE SYSTEM

12.4 THE OPTIONAL CHAMPIONSHIP REFEREE FEE PAYABLE BY ANY COUNTRIES THAT CHOOSES NOT HAVE REFEREES IN ITS DELEGATION

13. UNIFORMS

13.1 UNIFORM FOR THE DELEGATIONS

13.2 UNIFORM FOR THE TECHNICAL PERSONS

14. TECHNICAL MEETING

12.1 GENERAL TECHNICAL MEETING

12.2 OTHER TECHNICAL MEETINGS

15. MEDICAL CONTROL AND ANTI-DOPING

16. HOTEL

17.- MEALS

18. TRANSPORTATION

18.1 BETWEEN THE INTERNATIONAL AIRPORT AND THE HOTEL

18.2 WITHIN HOST CITY

19 VENUES

19.1 WSF – Complete Court Accreditation (CCA)

20. SERVICES

20.1 RACKET STRINGING

21. CITY OVERVIEW

TECHNICAL REGULATIONS FOR FPS JUNIOR CHAMPIONSHIP 2017.

Further to FPS confirmation that a Member Country will host an FPS Championship, the FPS will interact with the Member to confirm the Organizing authority of the Championship, including the individuals who will assume leadership and liaison roles.

1. LOCATION AND DATE

Asuncion, Paraguay.

24 to 30 June 2017.

2. COMPETITORS

National Federations that are full/active members (*) of the FPS may enter athletes into the competition.

* To be an active and full-fledged member, National Federations must be up date with the annual FPS membership fees corresponding to the Olympic Cycle prior to the start of the championship, The FPS annual fee is US\$ 1.000 (one thousand American dollars approved at the AGM 2016).

Wire transfers to be sent to (payment must be net of all bank charges):

JPMorgan Chase Bank, N. A.

TX1-3315

11770 Marsh Lane

Dallas, Texas 75229

Account Name: Federacion Panamericana de Squash

Account #: **858605277**

ABA Routing #: 111000614

SWIFT Code: CHASUS 33

2.1. PLACES ADMITTED BY DELEGATION

Each country shall be permitted to participate with the following:

- A maximum of eight (8) athletes: four (4) men and four (4) women.
- One (1) delegate.
- Two (2) coaches.
- One (1) referee

Each country shall have one (1) referee within their delegation who will be available for the full duration of the tournament under the direction of the Tournament Referee, Countries that do not have a referee in its delegation must pay a referee fee of US \$ 500,00

2.2. ENTRY FEES

The Entry Fee for a country is;

- US \$2,000.00 per Men's Team
- US \$2,000.00 per Women's Team

Individual event: US \$500.00 per individual player [only if the country is not entering a team]; to a maximum of 2 individual players per country (1female + 1 male).

Mix doubles event: US \$250.00 per individual player [only if the country is not entering a team]; to a maximum of 2 individual players per country. If a country is registers a team and a individual player is US \$250.00 for the team mix doubles.

US \$ 500,00 referees fee for countries that do not have a qualified referee in its delegation, approved at the FPS AGM 2016.

Wire transfers to be sent to (the bank of the host organization): information to be provided by the Organizers.

IN PARAGUAY

BANK: VISIÓN BANCO S.A.E.C.A

ACCOUNT NUMBER: - No. 900300318

RUC: 80029971-0

For wire transfer it should be add US\$ 80,00 to the total amount, banks commissions

INFORMATION FOR WIRE TRANSFERS:

1 - Banco Intermediario : CITIBANK N.A. NEW YORK.

Código SWIFT : CITIUS33

Código ABA : 021000089

Banco del Beneficiario : VISIÓN BANCO S.A.E.C.A.

Cuenta de Visión Banco : 36243776

Código SWIFT : VISCPYPA

Cliente beneficiario final - Asociación Paraguaya de Squash

Cuenta No. 900300318

RUC: 80029971-0

2 - Banco Intermediario: SOCIETE GENERALE. NEW YORK.

SWIFT Code: SOGEUS33

ABA: 026004226

Banco Beneficiario : VISIÓN BANCO S.A.E.C.A.

Cuenta de Visión Banco : 00201294

SWIFT Code : VISCPYPA

Cliente beneficiario final - Asociación Paraguaya de Squash

Cuenta No. 900300318

RUC: 80029971-0

2.3. ELIGIBILITY

A National Federation is eligible to enter in a championship if it is a paid-up Full Member of the FPS and is not indebted to the FPS by its failure to pay any relevant FPS dues or Championship entry fees. The members must have paid member dues for the quadrennial to date starting after the Pan American Games and finished the year of the Games.

2.3.1. JUNIOR CHAMPIONSHIPS

All players must be under the age of 19 as of the final day of the championship. Players must provide a copy of their passport to the Championship office prior to the first Technical Meeting. In the case of any queries, the original passport must be shown to the Technical Director.

2.3.2 ELEGIBILITY OF ATHLETES

A player is eligible to represent a country in a Pan American Championship if he has been born in the country, or is a citizen of, or became a naturalized citizen of, or has resided in, the country for at least **three years** immediately preceding the Championship.

NOTE: Notwithstanding the above, a player is ineligible to represent a country if he has represented another country in the **three years** preceding the Start Date in a recognized International Squash Championship (e.g. WSF World Championship, Regional Championship, official Match between National Federations) in any age group.

2.3.3 NATIONALITY OF COMPETITORS

in the year preceding a Pan Am Games, where the Pan American Championships is the qualifying event for the Pan Am Games, the athlete eligibility for the events is the same. Any competitor in the qualifying event Pan American Championships must be a national of the country (i.e. hold a passport) of the FPS member entering them.

3. ENTRIES

All the countries must complete the forms which will be forwarded by the FPS. These forms must be sent by the deadlines to the Organizing Committee.

3.1. NUMERICAL ENTRIES:

The numerical entries must be processed by the respective National Federation and must be received by the Organizing Committee no later than **60 days** prior to the start of the event. These entries must indicate the numbers of athletes and teams for each event.

DEAD LINE TO NUMERICAL ENTRIES: 25 April, 2017 – 12:00 Hs.

3.2. NOMINAL ENTRIES.

The nominal entries of all competitors must be received by Organizing Committee no later than **30 days** prior to the start of the event becoming the official nominal entry.

DEAD LINE TO NOMINAL ENTRIES: 25 May, 2017 – 12:00 Hs.

3.2.1 ALTERNATE ENTRIES

Each National Federation may name an alternate man and an alternate woman who will be permitted to replace a team member who, for any reason, is unable to participate in the event. No other substitution will be allowed.

3.3. SPIN (Squash Player Identification Number)

For ALL FPS sanctioned events players must provide their SPIN.

As of 1 January 2014 all players who wish to play in all World Individual and Team Championships, Regional Championships and World Junior Circuit events at all age levels will need to provide their SPIN. To obtain a SPIN, please visit www.worldsquash.org and click on the SPIN link.

4. REGULATIONS

The Championships will be carried out in accordance with the Official Regulations established by the Federacion Panamericana de Squash (FPS) - in force at the date of the competitions.

4.1. OFFICIAL BALL

The official ball for the competitions shall be **DUNLOP black double yellow dot** for all the courts.

4.2. PROTECTIVE EYEWEAR

All junior players (under 19 years of age) must wear protective eyewear (manufactured to an approved national safety standard) properly over the eyes at all times during practice and match play. The list of WSF Certified Eyewear allowable at the time of participation can be viewed on the WSF website.]. If a player persists in entering the court without eyewear, the player will lose the match. Additionally, the wearing of protective eyewear is mandatory for all participants in doubles event.

4.3. RESOLUTION OF CONTROVERSIES

Controversies not covered by these regulations shall be solved as follows:

4.3.1. **GENERAL NATURE** issues shall be solved by the Organizing Committee in accordance with FPS Regulations.

4.3.2. **TECHNICAL NATURE** issues will be solved by the Appeals Panel in accordance with the FPS Technical Regulations in force.

4.4.- OFFICIAL SOFTWARE

The official software to be used in all FPS Championships is: **Tournament Software**, according to WSF rules.

5. EVENTS, CATEGORIES AND SYSTEM OF COMPETITION

The squash competitions will comprise three main events in open category: Individual, Doubles and Teams.

5.1. INDIVIDUAL EVENT

Each country shall be permitted to enter up to four (4) men and four (4) women.

5.2. DOUBLES EVENT

Each country shall be permitted to be represented by one (1) men's couple, one (1) women's couple and (1) mixed couple. One player cannot participate in both events, doubles and mix doubles.

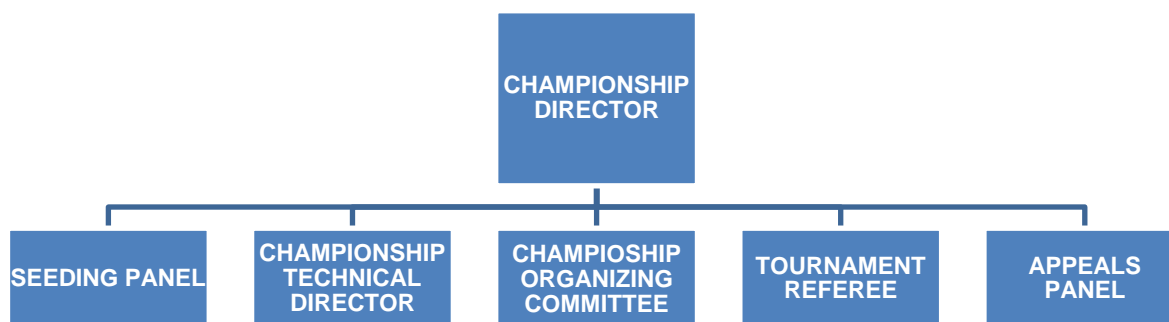
5.3. TEAMS EVENT

Each country shall be permitted to participate with a men's team and a women's team (minimum of 2 and maximum of 4 athletes).

6. STRUCTURE OF THE SQUASH CHAMPIONSHIP:

CHAMPIONSHIP AND MAJOR GAMES DIRECTOR

The Championship and Major Games Committee will be responsible for the appointment of the Seeding Panel, the Technical Director, Tournament Referee and the Appeals Panel, in addition to approving the appointment of the Organizing Committee of the Championship proposed by the host country. Coordinate and support the working groups to ensure the success of the championship.



6.1 CHAMPIONSHIP DIRECTOR

The Championship Director will be the liaison between the FPS with the Championship Organizing Committee, the Technical Director and the Tournament Referee, will be responsible for the overall schedule and the protocol of the championship. It is the maximum authority of the championship and it will be designated by the FPS Championship Committee.

Championship Director: Francisco Paradisi

E.mail: fps.sectq@gmail.com

6.2 SEEDING PANEL

The seeding panel will be responsible for the seeding and processing the draw, for each of the events under this regulation. The Seeding Panel will consist of seven (7) persons: the Technical Director, one member of the Technical Committee of the FPS, one delegate for each sub-region (North, Central, South America and the Caribbean) who must be familiar with the competitive level of the athletes and the President of the FPS or a person designated by him.

6.3. TECHNICAL DIRECTOR

The Technical Director shall be responsible for the organization, coordination and supervision of all squash competitions such as the general and daily scheduling of events, allotment of courts for training and competition. He or she will be responsible for coordinating all activities and events of such, based on regulations stated in this Technical Manual and any conventions or resolutions of the Championship and Major Games Committee.

Technical Director: Daniel Penna

E-mail: danielpennabr@gmail.com

6.4. CHAMPIONSHIP ORGANIZING COMMITTEE

The Championship Organizing Committee shall be responsible for appointing and supervision of administrative and support personnel, provide any required supplies, and coordinate any other logistic activities such as lodging, transport, food, hydration, emergencies, social activities, press facilities, etc.

Director General: Mario Dominguez

E-mail: director_nacional@paraguaysquash.com

Directora de Logística: Luciana del Piano

Director de Finanzas: Oscar Grau

6.5. TOURNAMENT REFEREE

The Tournament Referee shall be responsible for the officiating of the championships, including all matters regarding referees and compliance with the squash rules approved by the WSF. (See section 10 for a detailed description of Officiating and the Tournament Referee role). **TBA**

6.6. APPEAL PANEL

The Appeal Panel will be responsible for solving any dispute, appeal or irregular made both technical and moral occurring during the championship and inform the Organizing Committee, Technical Director, Tournament Referee, country delegates, the Disciplinary Committee of the FPS and other international bodies that deserve to have knowledge of the facts and decisions.

The Appeal Panel will consist of seven (7) people: the President, Vice-President and the Secretary General of the FPS and a representative of each sub-region (North, Central, South America and the Caribbean) appointed by the Executive Committee of the Federacion Panamericana de Squash, FPS, for senior championships.

The Appeal Panel will consist of five (5) people: the President, the Secretary General of the FPS and three (3) delegates appointed by the Executive Committee of the Federacion Panamericana de Squash, FPS, for junior championships. **TBA**

7. PROTESTS AND APPEALS

Any technical nature protest must be submitted in writing to the Appeal Panel or the Technical Director within maximum two (2) hours after the match. Any protest must be including a deposit of US\$100.00 (One hundred American dollars) or its equivalency in the

host country currency. The decision taken by the Appeal Panel shall be announced before the beginning of the following competition and cannot be appealed.

In case a delegate wishes to object to the score of a match, this claim must be submitted in writing before the Tournament Referee, who will decide about such objection. Any pronouncements made by the Referee during a match concerning Squash Regulations cannot be appealed.

The Appeal Panel is empowered to:

- Give warnings
- Suspend any player from the Championship, and / or any other member included in the delegation
- Inform to the according National Association, FPS, WSF and PSA, of all offenses or infractions committed by the players
- Require proof of legitimacy or other evidence of an injury, illness, or any other emergency situation that require the player to leave an event or the championship due to such cause.

8 SYSTEM OF COMPETITION

8.1. INDIVIDUAL EVENT

A direct elimination system shall be applied and a consolation round or plate may be programmed, upon agreement of the organizing committee and the championship director.

8.1.1. SCORING AND MATCHES.

In Individual event shall be applied **PARS (point-a-rally scoring) system up to eleven (11) points**. An individual match will consist to the best of five games, according to the WSF regulations.

8.1.2. DRAW AND SEEDS

Draws shall be made of 8, 16, 32 or 64. The size must be defined by the number of nominal entries.

8.1.2.1 FPS SEEDING PANEL

The seeding for all FPS Championships will be made by the Seeding Committee designated for that championship, The goal in the process of seeding is: a) seeding the first 25% of the draw, according to the ranking, to a maximum of 16 players. b) seeding the second 25% of the draw, according to the decision taken by the Seeding Committee.

Criteria for the seeding:

- 1.- Athletics with ranking to number 80 of the PSA, they will be seeded according to their ranking number low to high.
- 2.- According to their most recent performances.

The Seeding Committee will publish the draw seven (7) days before the start of the championship.

No appeals regarding seeding will be permitted.

NOTE: In the Individual Event a first-round match between competitors from the same country shall be avoided, in case that the draw presents this circumstance the place shall be drawn again.

Byes may be necessary in the draw; these will be assigned to players seeded by classification order, in downward order, in the case of seeded groups.

The draw will be carried out according to the detailed program below:

In the case of a Draw of 16, 8 top seeds.

In the case of a Draw of 32, 16 top seeds.

In the case of a Draw of 64, 32 top seeds

8.1.3. DRAW OF 16 (8 TOP SEEDS)

1st top seed	spot 1
2nd top seed	spot 16
3rd and 4th top seed	draw
1st drawn	spot 8
2nd drawn	spot 9
5th to 8th top seed	draw
1st drawn	spot 4
2nd drawn	spot 5
3rd drawn	spot 12
4th drawn	spot 13

The remaining 8 players will be drawn by placing them in order from top to bottom in the draw, if a bye exists these should be placed before the draw for the players.

8.1.4. DRAW OF 32 (16 TOP SEEDS)

1st top seed	spot 1
2nd top seed	spot 32
3rd and 4th top seeds	draw
1st drawn	spot 16
2nd drawn	spot 17
5th to 8th top seeds	draw
1st drawn	spot 8
2nd drawn	spot 9
3rd drawn	spot 24
4th drawn	spot 25
9th to 16th top seeds	draw
1st drawn	spot 4
2nd drawn	spot 5
3rd drawn	spot 12
4th drawn	spot 13
5th drawn	spot 20
6th drawn	spot 21
7th drawn	spot 28
8th drawn	spot 29

The remaining 16 players will be drawn by placing them in order from top to bottom in the draw, if a bye exists these should be placed before the draw for the players.

8.1.5. DRAW OF 64 (32 TOP SEEDS)

1st top seed	spot 1
2nd top seed	spot 64
3rd and 4th top seed	draw
1st drawn	spot 32
2nd drawn	spot 33
5th to 8th top seeds	draw
1st drawn	spot 16
2nd drawn	spot 17
3rd drawn	spot 48
4th drawn	spot 49
9th to 16th top seeds	draw
1st drawn	spot 8
2nd drawn	spot 9
3rd drawn	spot 24
4th drawn	spot 25
5th drawn	spot 40
6th drawn	spot 41
7th drawn	spot 56
8th drawn	spot 57
17th to 32 top seeds	draw
1st drawn	spot 4
2nd drawn	spot 5
3rd drawn	spot 12
4th drawn	spot 13
5th drawn	spot 20

6th drawn	spot 21
7th drawn	spot 28
8th drawn	spot 29
9th drawn	spot 36
10th drawn	spot 37
11th drawn	spot 44
12th drawn	spot 45
13th drawn	spot 52
14th drawn	spot 53
15th drawn	spot 60
16th drawn	spot 61

Remaining players (not seeded) will be drawn, regardless of the size of the Draw. They will be assigned from beginning to end filling the vacant places in continuous order.

8.1.6. OTHERS

For Individual event, only two people (2) coach and delegate shall be permitted to remain within the assigned area for each country during the matches. These people shall remain sitting on their seats while the athletes are playing. For any protest, the delegate must only address the Tournament Referee or the Technical Director, never the referees, markers, or the opponent's delegate or players.

8.2. DOUBLES EVENT

8.2.1. SCORING AND MATCHES

In doubles event, the **PARS (point-a-rally scoring) system up to eleven (11) points** will be applied. If the game gets to draw 10 to 10 will apply sudden death, the first team to reach 11 points win the game. A doubles match shall consist of the best of three (3) games, according to the WSF regulations.

8.2.2. DRAW AND SEEDS

In the doubles event **Men, Women and Mixed** - Draws of 8 / 16 / 32 will be made, depending on the number of countries registered, applying a direct elimination system (as outlined under the individual event). The size of the Draw is defined according to the nominal entries.

Delegates must submit their team lineup at the time of the nominal entries. Players may participate in only one doubles event (that is, either the mixed or the men's/women's doubles). The pair must be confirmed at the Technical Meeting at the beginning of the Championships. A player may be substituted in a pair no later than an hour prior to the first match of the pair. There will be no substitutions allowed after the pair has been defined (one hour prior to the first match).

Seeds for doubles events shall be determined by those members of the seeding panel present at the event, paying particular attention to the results from previous Panamerican Championships. The seeding will be done at the Technical Meeting at the beginning of the Championships. Countries not seeded will be drawn.

8.2.3. OTHERS

The use of eye guard is mandatory for all players in the double event, (see 4.2).

For doubles event, only two people (2) coach and delegate shall be permitted to remain within the assigned area for each country during the matches. These people shall remain sitting on their seats while the athletes are playing. For any appeal, the delegate must only address the Tournament Referee or the Technical Director, never the referees, markers, or the opponent's delegate or players.

During the matches, it is compulsory that players, coach and delegate wear the official country uniform. Each country shall bring at least 2 different colored uniforms. **Players from one country must use the same uniform and the color must be different from the other country.** In case of a conflict in color, the highest seeded team shall have priority.

8.3. TEAMS EVENT

The teams events, both men and women, will be carried out in two stages. Stage 1 corresponds to the Qualifying stage and the Stage 2 to the Classifying or play-off stage. The size of the Draw shall be determined by the nominal entries. In Stage 1, Robin Round Pools shall be used (groups "all against all"). In Stage 2, Draws of 4/ 8 / 16 / 24 will be drawn in order to define championship positions.

8.3.1. SCORING AND MATCHES

All team games of the championships will use the **PARS (point-a-rally scoring) system up to eleven (11) points.** An encounter by teams corresponds to the result from the three Individual matches from their three rackets.

Each single match shall consist of the best of five games, according to the WSF regulations. In the Stage 1, if the score is two (2) – zero (0), the third match must be played under the same conditions of the previous matches. At the Stage 2 or play off stage, if the score is two (2) to zero (0) the third game can be played to the

best three (3) games or it could not be played, since it does not affect the final result (unless the Classifying Stage involves a pool, where all matches must be played).

8.3.2. SEEDS

Team seeding will be done based on the results of the current year's individual draw.

Every player from every country scores points based on how far the player advances in the individual draw. Teams will be seeded based on the sum of the best three results achieved by the members of every national team in the individual event (only the best three results are considered, so as not to disadvantage those teams with only three players).

The points system to establish a seeding for the team event is as follows:

Every player that reaches the Round of 64 receives one point.

Every player that reaches the Round of 32 receives an additional point (so that players who reach this round receive 2 points accumulated as the total).

Every player that reaches the Round of 16 receives an additional point (so that players who reach this round receive 3 points accumulated as the total).

Every player that reaches the Quarter-finals (Round of 8) receives an additional point (so that players who reach this round receive 4 points accumulated as the total).

Every player that reaches the Semi-finals receives an additional point (so that players who reach this round receive 5 points accumulated as the total).

Every player that reaches the Final receives an additional point (so that players who reach this round receive 6 points accumulated as the total).

The Individual Champion receives an additional point (so that this player receives 7 points accumulated as the total).

For players who do not participate in the individual draw, the seeding panel will assign a point value based on where they would have been seeded in the individual draw, to a maximum of 5.

The Delegate must submit the names of his team's players in downward order of skills to the Technical Director, prior to 5 pm (17:00 hours) the day prior to the Teams Technical Meeting. The Technical Director shall circulate the team racket order by 6PM the day prior to the Teams Technical Meeting.

Any protest against the order of the rackets must be delivered to the Technical Director by two hours prior to the start of the Teams Technical Meeting which will

be held on the day prior to the start of the Team Competition. At the Technical Meeting the pool draws and the racket orders for day of the event will take place.

The roster of the rackets of the teams can be modified up to one (1) hour before starting the tie of that team. When racket 1 is not playing: racket 2 becomes racket 1, racket 3 becomes racket 2 and racket 4 becomes racket 3. When racket 2 is not playing, racket 3 becomes racket 2 and racket 4 becomes racket 3.

8.3.3. DRAWS FROM 6 TO 8 TEAMS.

Two groups are structured (A, B) at the Stage 1. The groups are organized with the following seeds:

Group A: 1, 3/4, 5/6, 7/8

Group B: 2, 3/4, 5/6, 7/8

At Stage 2, a draw of eight (8). The panel shall be organized as follows:

1st top seed spot 1

2nd top seed spot 8

3rd and 4th top seed draw

1st drawn spot 4

2nd drawn spot 5

5th and 6th top seed draw

1st drawn spot 3

2nd drawn spot 6

7th and 8th top seed draw

1st drawn spot 2

2nd drawn spot 7

They have to define all positions except 3^{er} and 4th places.

If there are 7 teams, the 1st seed will have a bye.

If there are 6 teams, the 1st seed and 2nd seed will have a bye.

8.3.4. FROM 9 TO 12 TEAMS:

Three (3) groups are structured (A; B; C) of four (4) countries each one or four (4) groups of three (3) countries at the Stage 1, at the discretion of the Championship Director.

The groups are organized with the following seeds:

Group A: 1, 4/5/6, 7/8/9, 10/11/12	1, 5/6/7/8, 9/10/11/12
Group B: 2, 4/5/6, 7/8/9, 10/11/12	2, 5/6/7/8, 9/10/11/12
Group C: 3, 4/5/6, 7/8/9, 10/11/12	3, 5/6/7/8, 9/10/11/12
Group D:	4, 5/6/7/8, 9/10/11/12

At the Stage 2, a draw of 16 with 4 byes. The panel is organized as follows:

Group of 3:

A1		Spot 1
B1		Spot 16
C1	drawn	Spot 8 or 9
A2, B2, C2	drawn	Spot 8 or 9
A2, B2, C2	drawn	Spot 5 and 12
A3, B3, C3	drawn	Spot 4 and 13
A3, B3, C3	drawn	Spot 3 and 14
A4, B4, C4	drawn	Spot 3 and 14
A4, B4, C4	drawn	Spot 6 and 11
BYES		Spot 2, 7, 10 and 15

Group of 4:

A1		Spot 1
B1		Spot 16
C1	drawn	Spot 8 or 9
D1	drawn	Spot 8 or 9
A2, B2, C2 and D2	drawn	Spot 5/8/9/12
A3, B3, C3 and D3	drawn	Spot 3/4/13/14

BYES

Spot 2, 7, 10 and 15

They have to define all positions except 3er and 4th places.

8.3.5. From 13 to 16 Teams:

Four groups are structured (A, B, C, D) at the Stage 1. The groups are organized with the following seeds:

Group A: 1, 5/6/7/8, 9/10/11/12, 13/14/15/16

Group B: 2, 5/6/7/8, 9/10/11/12, 13/14/15/16

Group C: 3, 5/6/7/8, 9/10/11/12, 13/14/15/16

Group D: 4, 5/6/7/8, 9/10/11/12, 13/14/15/16

At the Stage 2, a draw of 16 teams. The panel is organized as follows:

A1		Spot 1
B1		Spot 16
C1, D1	drawn	Spot 8 or 9
A2, B2	drawn	Spot 5 or 12
C2, D2	drawn	Spot 4 or 13
A3, B3	drawn	Spot 3 or 14
C3, D3	drawn	Spot 6 or 11
A4, B4	drawn	Spot 7 or 10
C4, D4	drawn	Spot 2 or 15

They have to define all positions except 3er and 4th places, if a bye exists these should be placed before the draw for the players and by the seedings.

8.3.6. From 17 to 24 Teams

Six groups are structured (A, B, C, D, E, F) at the Stage 1. The groups are organized with the following seeds:

Group A: 1, 7/8/9/10/11/12, 13/14/15/16/17/18, 19/20/21/22/23/24

Group B: 2, 7/8/9/10/11/12, 13/14/15/16/17/18, 19/20/21/22/23/24

Group C: 3, 7/8/9/10/11/12, 13/14/15/16/17/18, 19/20/21/22/23/24

Group D: 4, 7/8/9/10/11/12, 13/14/15/16/17/18, 19/20/21/22/23/24

Group E: 5, 7/8/9/10/11/12, 13/14/15/16/17/18, 19/20/21/22/23/24

Group F: 6, 7/8/9/10/11/12, 13/14/15/16/17/18, 19/20/21/22/23/24

In the Stage 2, a draw of 16 for the first and second qualified from each group plus the four best third and a second draw of 8 for the remaining teams. The panel is organized as follows:

Draw for 1 to 16th places

A1 Spot 1

B1 Spot 16

C1, D1, E1, F1 drawn Spot 5, 8, 9 and 12

A2, B2, C2, D2, E2, F2 drawn Spot 3, 4, 6, 11, 13 and 14

four best third drawn Spot 2, 7, 10 and 15

They have to define all positions except 3^{er} and 4th places

Draw for 17th to 24th places

A3, B3, C3, D3, E3, F3 drawn Spot 1 and 8

A4, B4, C4, D4, E4, F4 drawn Spot 2, 3, 4, 5, 6 and 7

They have to define all positions.

8.4. ORDER OF MATCHES

All played matches will follow a daily order. This order will be drawn for each day among the following possibilities (once an order is drawn, it will not be repeated until each order has been drawn):

1-2-3, 1-3-2, 2-1-3, 3-1-2.

All team members must appear at the scheduled start time of the encounter. If a player is not present the other players' must move up the playing order and such match (i.e. now the racket #3) is considered forfeited (W.O or walk-over). That player who arrives at a later time will not be allowed to make part of the team.

The delegate of the country will be entitled to protest before the Technical Committee in case of exceptional circumstances.

8.5. COMPETITION WITH AN INCOMPLETE TEAM

If a team has less than three players for any reason (injury, illness or other), then the absence will occur in the last place or racket #3. The roster of racket will be as stated above:

If Racket 1 does not play: 2 becomes 1, 3 becomes 2; and the racket #3 match is a default.

If Racket 2 does not play: 3 becomes 2; and the racket #3 match is a default.

If Racket 3 does not play: this match is defaulted.

A defaulted or abandoned (W.O.) match will be counted as 3/0 in games and 33/0 in points.

If, during a match, a player has to leave the court due to illness or injury, the order will not be affected.

8.6. FINAL ORDER OF THE TEAMS IN GROUP

All the teams will play against each other in a group to establish a merit order. This will be decided in accordance with the following:

First according to the higher amount of won encounters.

If there is tie between two teams, then, according to the scores between the teams.

If three teams have won the same amount of encounters, then, according to the greater amount of won matches. If two teams still equal, then by the result between the two teams.

If the tie persists, then, according to the higher positive difference between won and lost games in all matches. If two teams still equal, then by the result between the two teams.

If the tie persists, then, according to the higher positive difference between won and lost points in all matches. If two teams still equal, then by the result between the two teams.

If the tie persists, then by draw.

8.7. OTHER

For the team event, only five (5) people - team players, coach, and delegate can remain within the sector assigned for the country of the team. These people shall remain seated in the seats assigned while the game is underway. For any appeal the delegate must address the Tournament Referee, or the Technical Director, only, never the Referees, or Marker of the Tournament, or the opponent delegate or players. During the dispute of the team event it is mandatory for the players, coaches, captains, and delegates to wear the same official game and representation uniform of each country.

9. COMPETITION PROGRAM

MONTH	YEAR	DAY	EVENT	TIME	LOCATION
JUNE	2017	23	Arrival of delegations	from 10:00 a.m. to 6:00 p.m.	
		23	Technical Meeting	08:00 p.m.	
		24	Individual competition R64 M & F	09:00 a.m.	
		24	Individual Competition R32 M & F	04:00 p.m.	
		24	Opening	06:00 p.m.	
		24	Individual Competition R32 M & F	07:00 p.m.	
		25	Individual Competition R16 M & F	09:00 a.m.	
		25	Individual Competition R8 M & F	18:00 pm	
		26	Competition Doubles & Mixed M & F	9.00 am	
		26	M & F Individual Competition Semifinals	11.30 am	
		26	Competition Doubles Mix M & F & R8	02:00 p.m.	
		26	Final Individual M & F	08:00 p.m.	
		27	Doubles Semifinals and Mixed M & F	09:00 a.m.	
		27	Technical Meeting teams	3.15 pm	
		27	Final Doubles and Mixed M & F	5.30:pm	
		28	Team Competition Round Robin 1	09:00 a.m.	
		28	Team Competition Round Robin 2	06:30 p.m.	
		29	Team Competition Round Robin 3	09:00 a.m.	
		29	R8 Team Competition	06:00 p.m.	
		30	Team Competition Semis	09:00 a.m.	
		30	Teams Competition Final	06:00 p.m.	
		30	Closing	10:00 p.m.	
july	2017	1	Departure of delegations		

23-jun	24-jun		25-jun		26-jun		27-jun		28-jun		29-jun		30-jun	01-jul
VIE	SAB		DOM		LUN		MAR		MIE		JUE		VIE	SAB
LLEGADA	AM	PM	AM	PM	AM	PM	AM	PM	AM	PM	AM	PM		SALIDA
Congresillo Técnico	64 indiv	32 indiv	16 indiv	8 Indiv	16 Dobles / SF Indiv	8 Dobles / F Indiv	SF Dobles	F Dobles	RR1 T	RR2 T	RR3 T	8por equipos	SF	F

Note – that the schedule may be revised as required by the Organizing Committee

10. TRAINING PROGRAM

The training shall be carried out at the venues designated by the Organizing Committee and the practice schedule for the same will be set up and handed out at the General Technical Meeting at the start of the Championships. The venues can only be used during the schedules assigned by the Tournament Director.

11. PROTOCOL, AWARDS AND MEDALS

11.1 CEREMONIES

For both the Opening and Closing Ceremonies, all delegations are required to attend the events, and be wearing the representative official uniforms of their country. All delegations are to bring the national anthem of their country (a short version) and the country's flag, to the Organizing Committee (they will be returned at the conclusion of the event).

The **Opening Ceremony** of the Squash Championships will be held on the first day of play.

The **Closing Ceremony** of Squash Championships will be held at the conclusion of the Team Championship, on the final day of play.

11.2 AWARDS.

The FPS establishes the following awards:

- 1st Place: Gold Medal
- 2nd Place: Silver Medal
- 3rd & 4th Places: Bronze Medal

The Protocol Award Ceremonies will take place after each event (or may be all held at the conclusion of the Championship). The athletes ranked in first, second and third places, shall be taken to the presentation area once the event is over. For the ceremony, they will have to wear the representative official uniforms of their country.

11.3 MEDALS

Competitions	Medals		
	GOLD	SILVER	BRONZE
INDIVIDUAL MEN	1 (1)*	1 (1)*	2 (2)*
INDIVIDUAL WOMEN	1 (1)*	1 (1)*	2 (2)*
TEAM MEN	1 (4)*	1 (4)*	2 (8)*
TEAMS WOMEN	1 (4)*	1 (4)*	2 (8)*
DOUBLES MEN	1 (2)*	1 (2)*	2 (4)*
DOUBLES WOMEN	1 (2)*	1 (2)*	2 (4)*
DOUBLES MIXED	1 (2)*	1 (2)*	2 (4)*
TOTAL	7 (16)*	7 (16)*	14 (32)*

* The number in parentheses corresponds to the medals per unit.

12. TECHNICAL OFFICIATING

The Technical Officials are conformed by:

Technical Director, Referees and the Appeal Panel.

The Panamerican Squash Federation (FPS), shall appoint, through resolution, a Tournament Referee, and he, in turn, shall be responsible for the selection, appointment, and supervision of national and international referees according to the regulations set up for the Championship, and this will be in force before facing any disagreement in connection with the Championship Regulations.

To carry out the tournament, a minimum of four (4) referees per court shall be required, plus the Tournament Referee and the Assistant Referee, referees will be distributed as follows: 75% of international referees and 25% referees for the host country, if this cannot be achieved the vacancies shall be taken by a decision from the Tournament Referee regardless of the required minimum. The Tournament Referee shall appoint percentages.

12.1 TOURNAMENT REFEREE ROLE

The Tournament Referee is responsible for:

- Making sure the tournament is conducted according to the WSF Regulations for the Games in force. He is the final authority for the interpretation of the Regulations.
- Selecting the number of officials duly qualified for the event.
- Organizing as many sessions as necessary to ensure the officials are familiar with all the rules, interpretations in force and the code of behavior.
- Assuring a good supply of balls approved by the WSF as well as other appropriate elements: Draws, boards, pens, official clock, microphone, cleaning implements, first aid equipment.
- Coordinating identification, uniforms, lodging, meals, tickets, and access to social events for referees.
- Appointing an Assistant Tournament Referee.
- Making up a general Tournament Report for the Organization of the Championships, including photographs.

12.2. REFEREES MEETINGS

The Officiating Meetings will be carried out every day at the venue of the competition in order to discuss matters relative to refereeing, to inform the referees and markers designation for the competitions of the day and any other activity.

12.3 OFFICIATING SYSTEM.

The Championship Director and the Tournament Referee will decide the system to be used based on the current regulations.

12.4 THE OPTIONAL CHAMPIONSHIP REFEREE FEE

The optional championship referee fee of US\$ 500,00 payable by any countries that chooses not have referees in its delegation.

13. UNIFORMS

13.1 TEAM UNIFORMS

During the tournament it is mandatory for the players, coaches, captains, and delegates to wear the official and representative uniform of each country. The Athletes can wear clothing with any kind of color or color combinations. Every country must have at least two uniforms of different colors so that the opponent teams can be easily identified. All uniforms must have the name of the country on the back. Note - During the Doubles Competition **Players from one country must use the same uniform and the color must be different from the other country.**

It is absolutely forbidden the use of clothing showing any advertisement in a Major Games Championship. The Technical Committee, the Tournament Director, the Tournament Referee, or a Referee or an official have the authority to request a player, coach or delegate to change his clothing in case he is not complying with the set up on this Item.

In a FPS Championship:

Sponsor logo

Shirts or tops:

a) May carry the manufacturer's normal trademark, symbol or name on one breast - the display to be contained within an area not exceeding 20 square centimetres in total and 10 centimetres in any one dimension.

b) May carry identification, in areas clearly separated from each other, on the opposite breast to the manufacturer's symbol and/or on each arm, as follows:

i) Three sponsors' displays - each to be contained within an area not exceeding 40 square centimetres in total and 10 centimetres in any one dimension; or

ii) Two sponsors' displays and one national identification badge - each contained within an area not exceeding 40 square centimetres in total and 10 centimetres in any one dimension.

c) In all FPS Championships shirts or tops must carry a national identification title as defined below.

i) a) National Identification / Player name. A national identification title, the whole to be contained within an area at least 200 square centimetres and not exceeding 300 square centimetres on the back of the shirt or dress.

b) The player's name may also be displayed within an additional area not exceeding 150 square centimetres.

c) Lettering must be in one colour that strongly contrasts with the shirt colour.

ii) Specifications.

a) National identification / player names must be strongly visible and in Spanish or Anglicised alphabet capital letters.

b) Players' names shall be their family name. Initials may be used in front of family names.

c) The minimum lettering width for national and player names will be 20cms and height 5cms, except in the case of names with fewer than five letters for which the following minimums widths will apply, four letters 16cms, three letters 13cms two letters 11cms.

iii) Country names flags may be added at the discretion of the player/nation

Shorts or skirts/dresses may carry:

- a) The manufacturer's normal trademark, symbol or name on one side or leg, contained within an area not exceeding 10 square centimetres in total.
- b) One sponsor display on the opposite side or leg from that in Regulation L8a above, contained within an area not exceeding 20 square centimetres in total and 10 centimetres in any one dimension.

13.2 TECHNICAL OFFICIALS UNIFORMS

The Organizing Committee of the Championship must provide technical staff uniforms, which are: Technical Director, Tournament Referee, Referees and Appeal Panel.

14. TECHNICAL MEETINGS

14.1 THE GENERAL TECHNICAL MEETING

The General Technical Meeting will be held the day before the first day of the Championships where all information about the Squash Tournament will be handed out, and seeds, draws, etc., will be established. Only the delegates and coaches of the countries will be permitted to attend.

14.2. OTHER TECHNICAL MEETINGS.

Other Technical Meetings will be held whenever necessary, especially prior to the starting of the doubles event and the teams event; so as to define seeds, rackets, and draw of spots corresponding to the panels. Only the delegates and coaches of the countries are permitted to attend.

15. MEDICAL CONTROL AND ANTI-DOPING

During the Squash Championships anti-doping tests will be done, under the technical specifications of the WADA-AMA.

The Anti-Doping control tests will be responsibility of the Olympic Committee of the host country. The regulations in force will be those from Medical Commissions of the International Olympic Committee, WADA-AMA (World Anti-doping Agency) and PASO.

The selection of the competitors for the samples taking shall be carried out by the Medical Commission in coordination with the delegate of the Federacion Panamericana Squash, FPS, and the Organizing Committee. The samples for the doping control shall be analyzed at the Laboratory of host country, duly approved by the International Olympic Committee.

Any athlete refusing to any medical control or examination or who is found guilty of doping shall have his/her accreditation withdrawn and shall be ejected from the current Championships and possibly from future international competitions according to the penalties established by the PASO and the WSF regulations.

16. HOTEL

The Organizing Committee will confirm a Tournament Hotel, where all delegations will be accommodated, the hotel must meet the minimum requirements for the Federacion Panamericana Squash, FPS, and be approve by the FPS.

Official Hotel: Hotel del Comité Olímpico Paraguayo

The organizers of the event will assume the hotel payment for up to eleven persons, as defined by the delegation (i.e. 8 players [4 men / 4 women], two coaches and one delegate), for eight (8) nights, in double and triple room accommodation, also the cost of technical officials and referees for eight (8) nights in double room accomodation. Delegations wishing to stay extra nights, or requiring more rooms; will be responsible for the additional expense.

The hotel and rates will be communicated by the Organizing Committee.

Referential cost of the hotel: US\$ 20 per person per day, breakfast included,
Triple room

The Organizing Committee of the Championship will cover the accommodation for the Technical Staff in double rooms.

17. MEALS

The Organizing Committee of the Championship will provide breakfast to all the delegations, breakfast must meet the needs for highly competitive athletes, it is also responsible for the hydration for the delegations, technical personnel and officials at the venue.

The Organizing Committee of the Championship also will provide all the meals for the technical staff.

18. TRANSPORTATION

The Organizing Committee of the Championship is responsible for the transportation of all delegations and the personal staff, as follow:

18.1 Between airport and hotel

The organizers will pick up the delegations, technical personnel and referees from a named airport and transfer to the Official Hotel and take them back to the airport when the championship ends. **Flight must be confirmed with the Organizers ten (10) days prior to arrivals.**

18.2 Between the hotel and the venue.

The Championship Organizing Committee is responsible for organizing transportation between the hotel and the venue and vice versa for all delegations, technical personnel and referees.

19. VENUES

The Organizers will confirm a squash facility to host the competition, which will have an appropriate number of courts and supporting structures; to include: change rooms, area for warm-up, offices for the Technical Director and Tournament Referee, room for referees and technical personnel and proximity to restaurants.

VENUES:

- CLUB INTERNACIONAL DE TENIS (CIT)
Address: Calle Teniente 2do. Benigno Cáceres y Sinforiano Buzó Gómez
- CENTRO NACIONAL DE SQUASH (CNS)
Address: Av. Eusebio Ayala Km. 4 ½ y R.I.6 Boquerón - Asunción – Paraguay

19.1 WSF – Complete Court Accreditation (CCA)

If newly built courts completed after 1st January 2013 are to be used then they must be listed in the WSF worldwide directory of Complete Court Accredited (CCA) courts if they are to be considered for hosting matches recognized by the Federation . (This specification is not applicable for courts in existence before 2013, where normal adherence to WSF specifications will apply)

20. SERVICES

The Organizers will define what additional services that they will offer the Championship participants.

20.1. RACKET STRINGING

There will be racket stringing service available. The delegations shall pay for this service when used (cost to be confirmed).

21. CITY OVERVIEW

The Organizers will provide an overview of the host city for the Championship, to note climatological conditions including temperature and altitude, place of interest and cultural places.

Information:

https://www.youtube.com/watch?v=uWV5_KWnxxU

<https://www.youtube.com/watch?v=nOyQdZxoS7Q>

Asunción es la [capital](#) y [la ciudad más poblada](#) de la [República del Paraguay](#). Está ubicada junto a la bahía de Asunción, en la margen izquierda del [río Paraguay](#), frente a la confluencia con el [río Pilcomayo](#). Fundada en 1537 es una de las ciudades más antiguas de Sudamérica.

Asunción es sede de los tres poderes de la Nación ([Ejecutivo](#), [Legislativo](#) y [Judicial](#)), y del principal [puerto fluvial](#) (Dirección General de Aduanas), además constituye el centro cultural del país.

A pesar de algunas variantes en el transcurso del tiempo, desde su fundación y hasta nuestros días, Asunción es el centro de la actividad [nacional](#). Desde la capital se imparten las principales resoluciones y proyectos de los poderes del [Estado](#), y se centralizan la banca, las entidades económicas, culturales, diplomáticas, sociales, gremiales e industriales del país.

Asunción es considerada una [ciudad global](#) de categoría "gamma -". La ciudad se ubica entre las capitales más baratas del mundo, también es considerada como una de las ciudades más seguras de la [región](#), y últimamente como una de las mejores ciudades para la [inversión](#), tanto de construcciones como de servicios.

Weather: 17 °C to 28 °C

El clima de Asunción es [subtropical húmedo](#). La temperatura media anual ronda los 22 [°C](#) y las [precipitaciones](#) rondan los 1400 [mm](#) anuales.

Asunción es considerada la capital [iberoamericana](#) más calurosa en términos absolutos, debido a su posición geográfica y a que durante la mayor parte del año predominan las temperaturas cálidas.

Los [veranos](#) son calurosos y húmedos (media de 28 °C); mientras que los [inviernos](#) son templados (media de 17 °C), e irregulares, ya que pueden presentarse días de intenso frío e inclusive días calurosos.

Datos Útiles de la ciudad de Asunción

- Población: 1.510.000 Habitantes en Asunción y Gran Asunción.
- **Language: Spanish and guaraní** (idioma nativo hablado en todo el país)
- Propinas: 10% en restaurantes y servicios.
- **Electricity: 220 volts y 50 ciclos.**
- Estaciones: Verano (21dic-20mar), Otoño (21mar-20jun), Invierno (21jun-20sep), Primavera (21sep-20dic)
- **Currency: Guaraní (G\$), US dollars are accepted.**
- **Change rate U\$S 1,00 = Gs. 5.400**
- Cambio: El tipo de cambio del guaraní es libre y su cotización fluctúa de acuerdo a la demanda.
- Tarjetas de crédito Se aceptan todas las tarjetas: American Express, Diners Club, Visa, Mastercard, otras.
- Horarios comerciales: Los centros comerciales se mantienen abiertos de 9:00 a 20:30 hs. mientras que el resto de las tiendas lo hace de 8:00 a 18:30 hs.
- Horarios bancarios. De lunes a viernes de 08:30 a 15:30